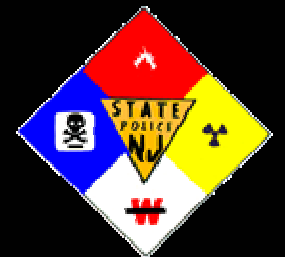


# MODULE 5

# SCENE MANAGEMENT





The killer plant

Once the deadly MIC gas emitted by this Carbide plant engulfed the entire city of Bhopal in a deathly embrace. 17 years later, it is the smoke from the domestic fires of the residents around it that clouds it every evening. Of course, there is no comparison between the two. The plant stands tall and unaffected as landmark of the tragedy, and its deadly emissions continue to have painful and shocking consequences even today.

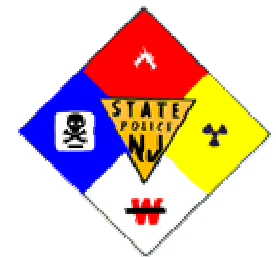


# THE FIRST RESPONDER AT THE **AWARENESS** LEVEL HAS SEVERAL RESPONSIBILITIES AT THE SCENE OF A HAZ MAT INCIDENT/ACCIDENT

- **MAKE PROPER NOTIFICATION**
- **ATTEMPT TO IDENTIFY THE PRODUCT**
- **SECURE THE SCENE**



# What happens When the call is received.



# FIRST

- **Notify your dispatch center that you are involved in a possible hazardous materials incident**
- **Have your dispatcher notify DEP of the event.**

**NOTIFY DEP HOTLINE**

**1-877 WARN DEP (1-877-927-6337)**



# Attempt to Identify the Product

**MAKE YOUR OBSERVATIONS FROM A SAFE DISTANCE**

- IDENTIFY ANY PLACARDS, LABELS, SHIPPING PAPERS OR OTHER DOCUMENTATION
- THE EMERGENCY RESPONSE GUIDEBOOK IS A USEFUL TOOL



# MAKE PROPER NOTIFICATIONS

- ONCE INFORMATION IS GATHERED, NOTIFY YOUR DISPATCH CENTER OF THE SITUATION AND HAVE APPROPRIATE AGENCIES RESPOND

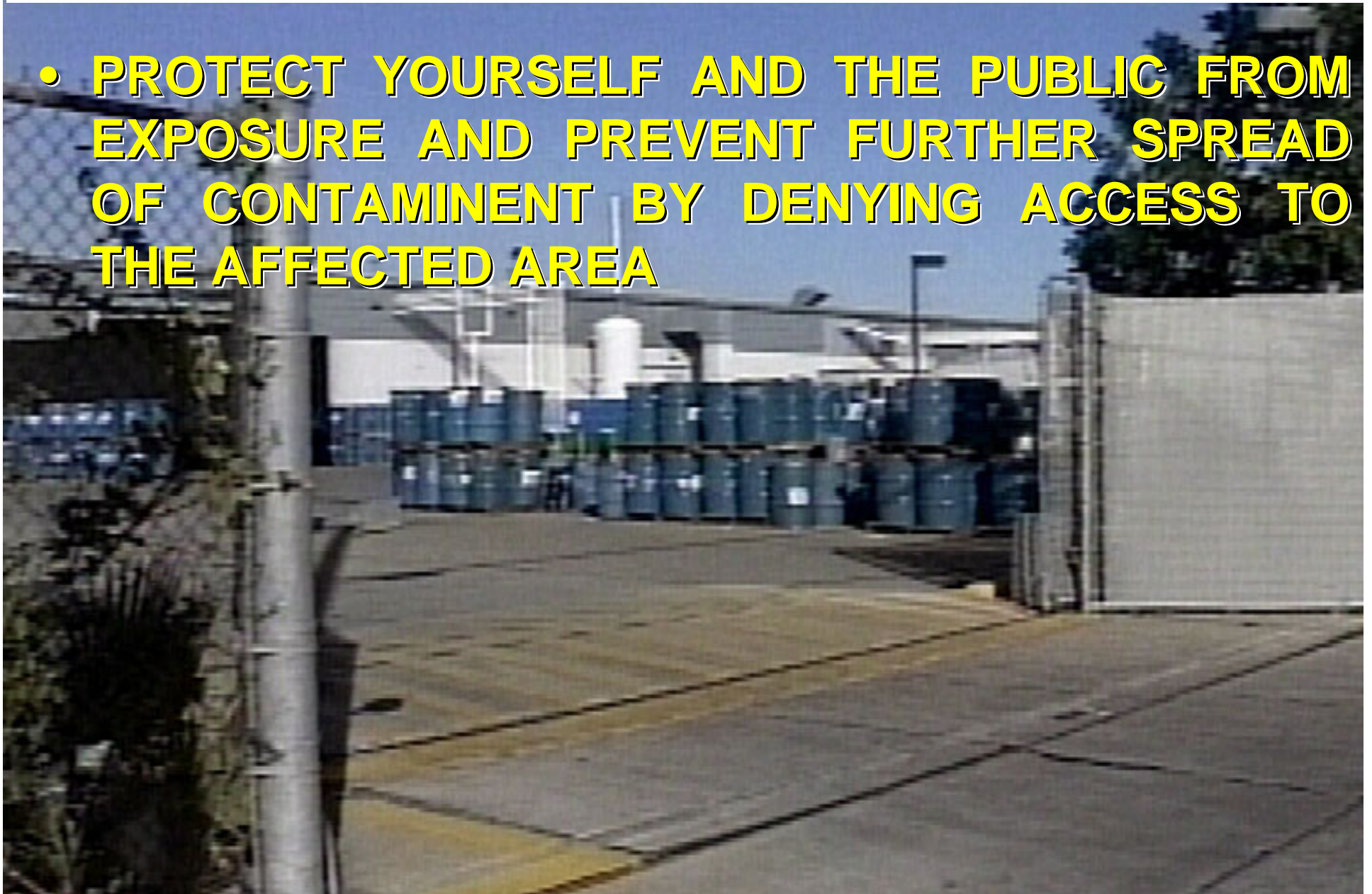


**NOTIFY DEP HOTLINE**

**1-877 WARN DEP (1-877-927-6337)**

# SECURE THE SCENE

- PROTECT YOURSELF AND THE PUBLIC FROM EXPOSURE AND PREVENT FURTHER SPREAD OF CONTAMINANT BY DENYING ACCESS TO THE AFFECTED AREA





**DO NOT use flares near flammable material**



# SITE CONTROL IS THE PRIMARY CONCERN IN SCENE MANAGEMENT

WHAT ARE THE THREE ZONES USED TO ESTABLISH SITE CONTROL?

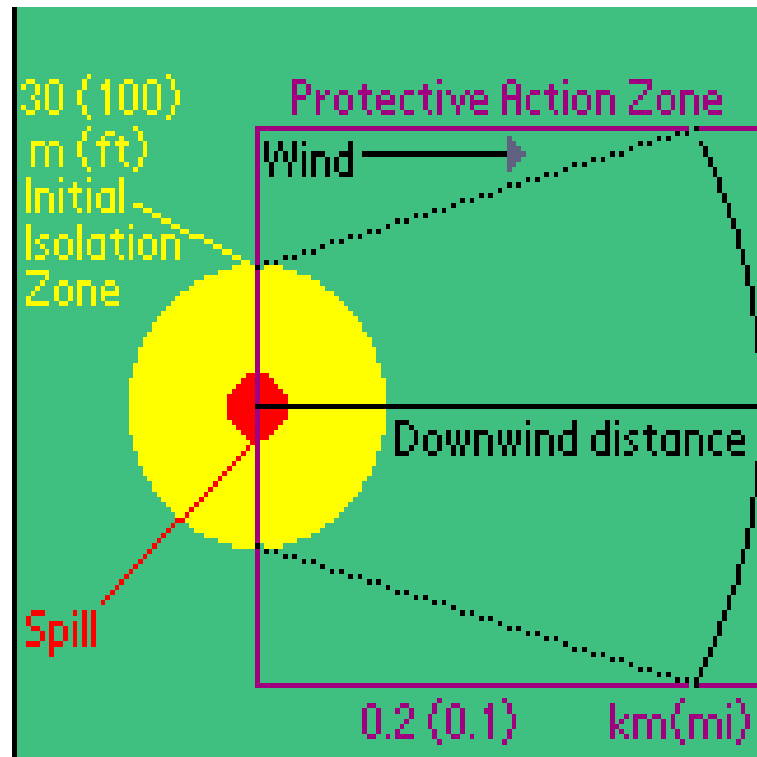
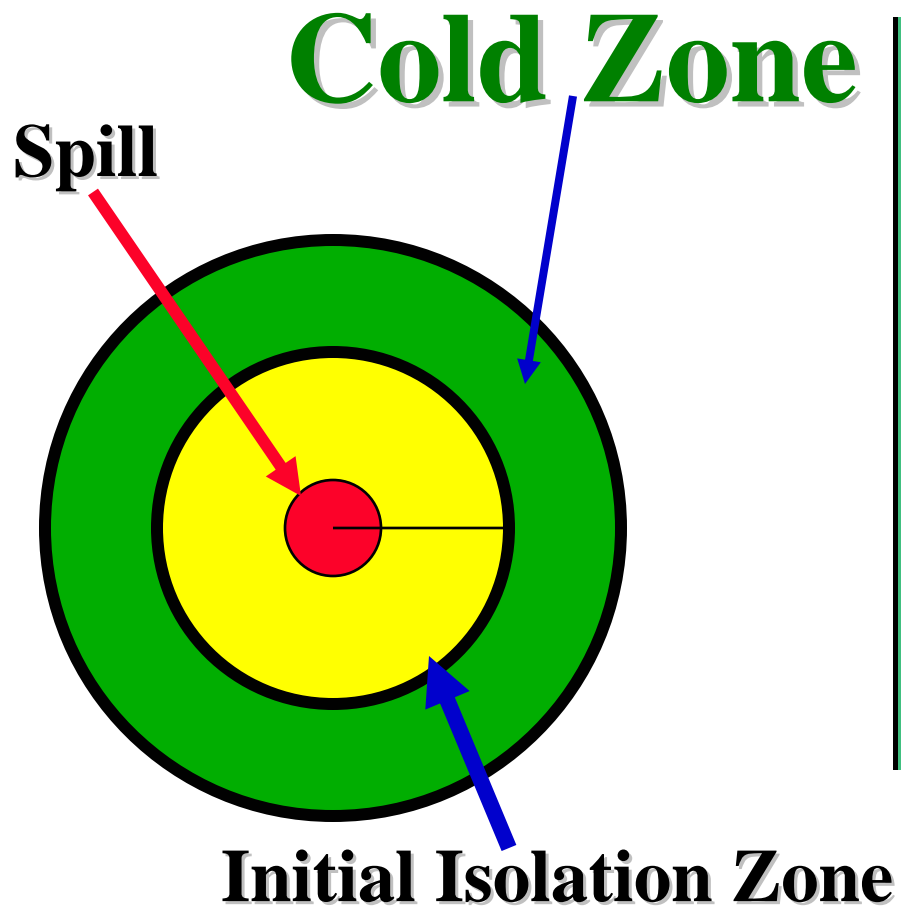
◆ HOT ZONE

◆ WARM ZONE

◆ COLD ZONE



# Control Zones



# HOT ZONE

LOCATION AND SURROUNDING  
AREA WHERE INCIDENT OCCURS

IH 10 EAST AT THE Y



# COLD ZONE



- ENTIRE AREA SURROUNDING HOT ZONE
- DETERMINED TO BE SUFFICIENTLY DISTANCED FROM INCIDENT AS TO AFFORD SAFETY TO PERSONNEL, ENVIRONMENT AND EQUIPMENT



**WARM  
ZONE**

- **TRANSITIONAL AREA BETWEEN HOT & COLD ZONE**
- **ESTABLISHED BEFORE ENTRY/EXIT IS MADE INTO THE HOT ZONE**
- **ALSO REFERRED TO AS THE CONTAMINATION REDUCTION CORRIDOR OR THE DECON LINE**



# REGARDLESS OF THE SIZE AND NATURE OF THE SITUATION, THE INCIDENT COMMAND SYSTEM IS TO BE EMPLOYED



- THE INCIDENT COMMAND SYSTEM IS RECOGNIZED AS THE MOST SUCCESSFUL MEANS OF MANAGING RESOURCES AT AN EMERGENCY OPERATION



# THERE ARE FOUR PRIMARY FEATURES OF THE INCIDENT COMMAND SYSTEM

**ADAPTABILITY**

**FLEXIBILITY**

**SPAN OF CONTROL**

**UNITY OF COMMAND**





FOUR PRIMARY FEATURES OF THE  
INCIDENT COMMAND SYSTEM

## **ADAPTABILITY**

***AN ALL HAZARDS INCIDENT  
MANAGEMENT SYSTEM  
THAT READILY ADAPTS  
ITSELF TO YOUR  
PARTICULAR SITUATION***

# FOUR PRIMARY FEATURES OF THE INCIDENT COMMAND SYSTEM



- ***FLEXIBILITY*** -  
***EASILY CONFORMS TO  
EXPANDING SITUATIONS BY  
SIMPLY ADDING  
ADDITIONAL ICS  
ELEMENTS***

# FOUR PRIMARY FEATURES OF THE INCIDENT COMMAND SYSTEM



**SPAN OF CONTROL -  
*LIMITS A MAXIMUM OF  
FIVE SUBORDINATES TO  
ONE SUPERVISOR***

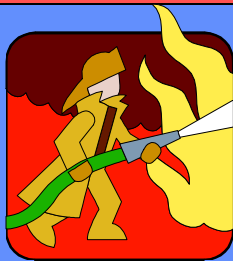
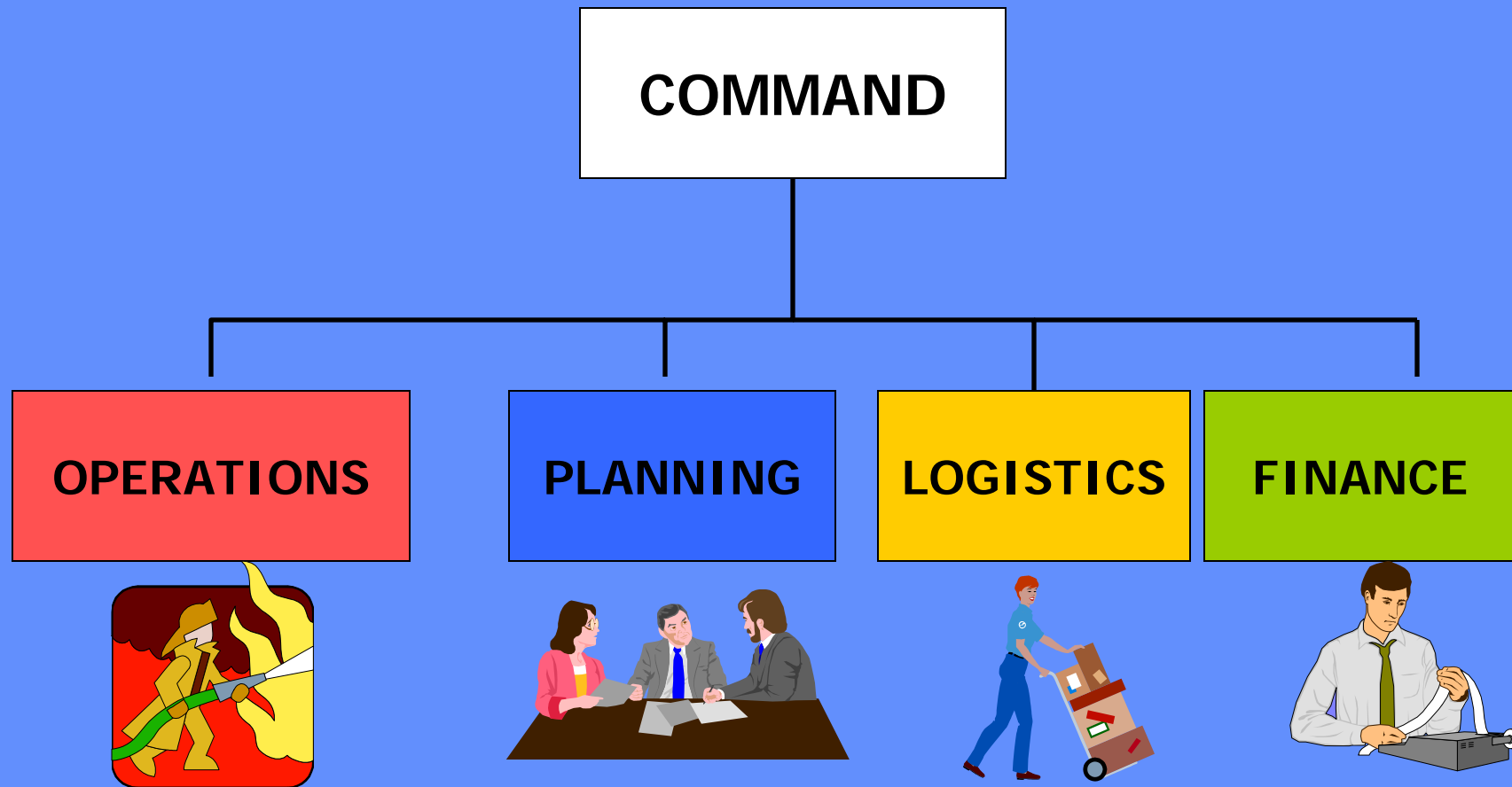


## FOUR PRIMARY FEATURES OF THE INCIDENT COMMAND SYSTEM

- *UNITY OF COMMAND*

***EVERYONE IS ON  
THE SAME PAGE.***

# Incident Command System



# Incident Management System

- NWCG
- NFPA
- NIIMS
- NIMS



Whichever program you use the basics are the same



# IC's Responsibilities: Assess Incident Priorities

**1. Life Safety**

**2. Property Conservation**

**3. Incident Stabilization**

